

# Introduction to Globus for ALCF Users

## Research Data Transfer

2022 ALCF Computational Performance Workshop  
May 26, 2022

**Greg Nawrocki**  
[greg@globus.org](mailto:greg@globus.org)  
[nawrocki@uchicago.edu](mailto:nawrocki@uchicago.edu)  
[nawrocki@anl.gov](mailto:nawrocki@anl.gov)



THE UNIVERSITY OF  
**CHICAGO**





Globus is ...

a non-profit service  
developed and operated by



THE UNIVERSITY OF  
CHICAGO



## Our Mission

Increase the efficiency and effectiveness of researchers engaged in data-driven science and scholarship through **sustainable** software

 Development is funded by...



U.S. DEPARTMENT OF  
**ENERGY**



THE UNIVERSITY OF  
**CHICAGO**



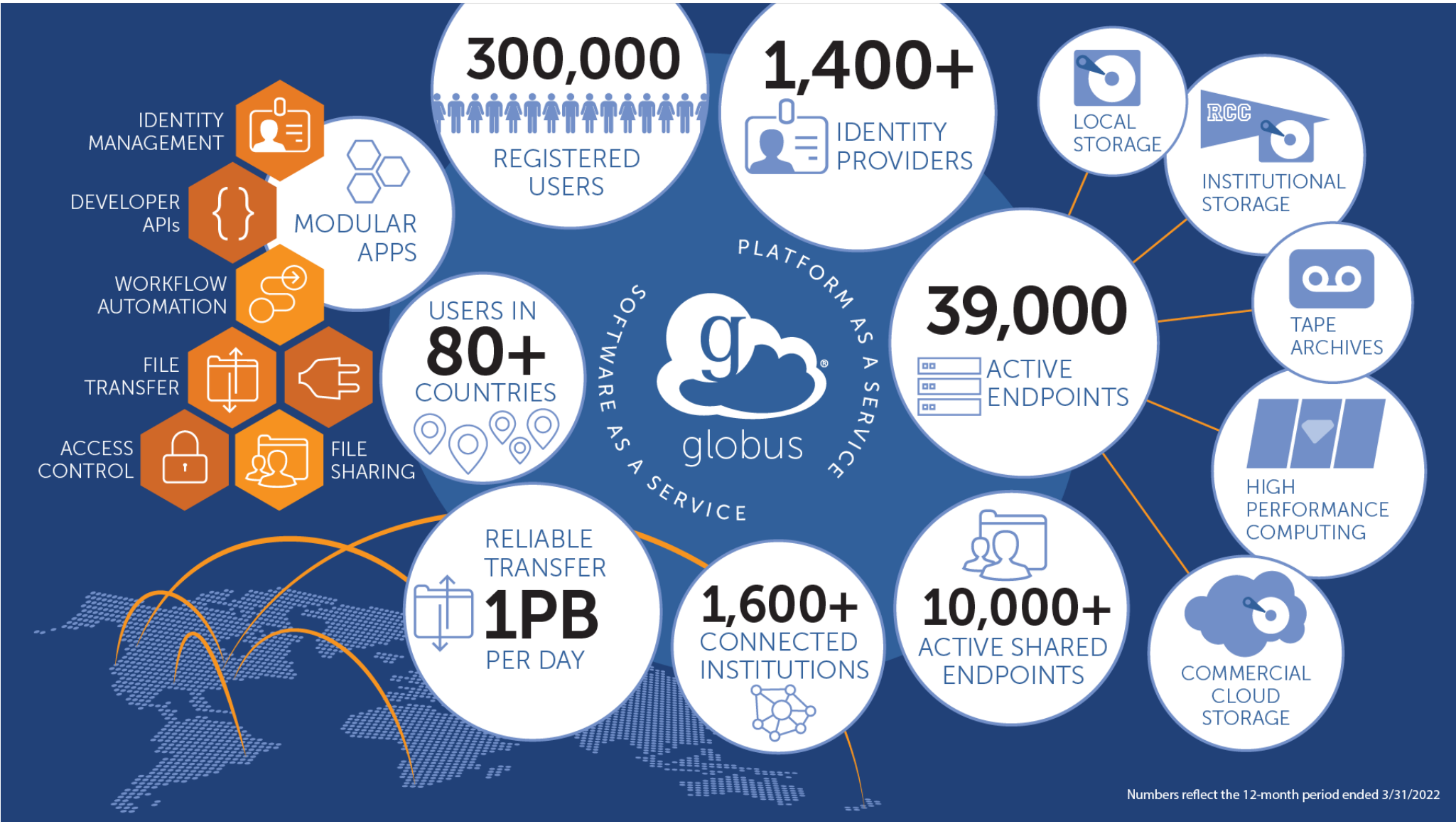
**NIST**  
National Institute of  
Standards and Technology  
U.S. Department of Commerce

Argonne   
NATIONAL LABORATORY



# Operations are funded by subscribers





Numbers reflect the 12-month period ended 3/31/2022

1,587,616,487,880 MB  
TRANSFERRED





Globus delivers...

Fast and reliable big data transfer,  
sharing, and platform services...

...directly from your own storage  
systems...

...via software-as-a-service using  
existing identities with the overarching  
goal of...



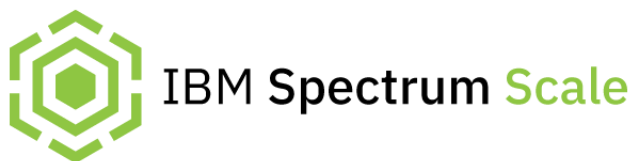


# ...unifying access to data across tiers





# PREMIUM globus connectors



# Globus SaaS / PaaS: Research data lifecycle

Instrument



Globus transfers files reliably, securely

2

Transfer

Compute Facility



4 Globus controls access to shared files on existing storage; no need to move files to cloud storage!

4

6 The Timer and Automation Services, the Command Line Interface, API sets, and Python SDK provide the tools...

6

Build

1 Researcher initiates transfer request; or requested automatically by script, science gateway

1



3 Researcher selects files to share, selects user or group, and sets access permissions

3

Share

5 Collaborator logs in to Globus and accesses shared files; no local account required; download via Globus

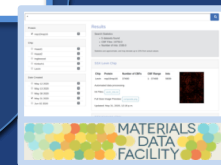
5



Personal Computer

7

7 ... for building science gateways, portals, publication services...



8

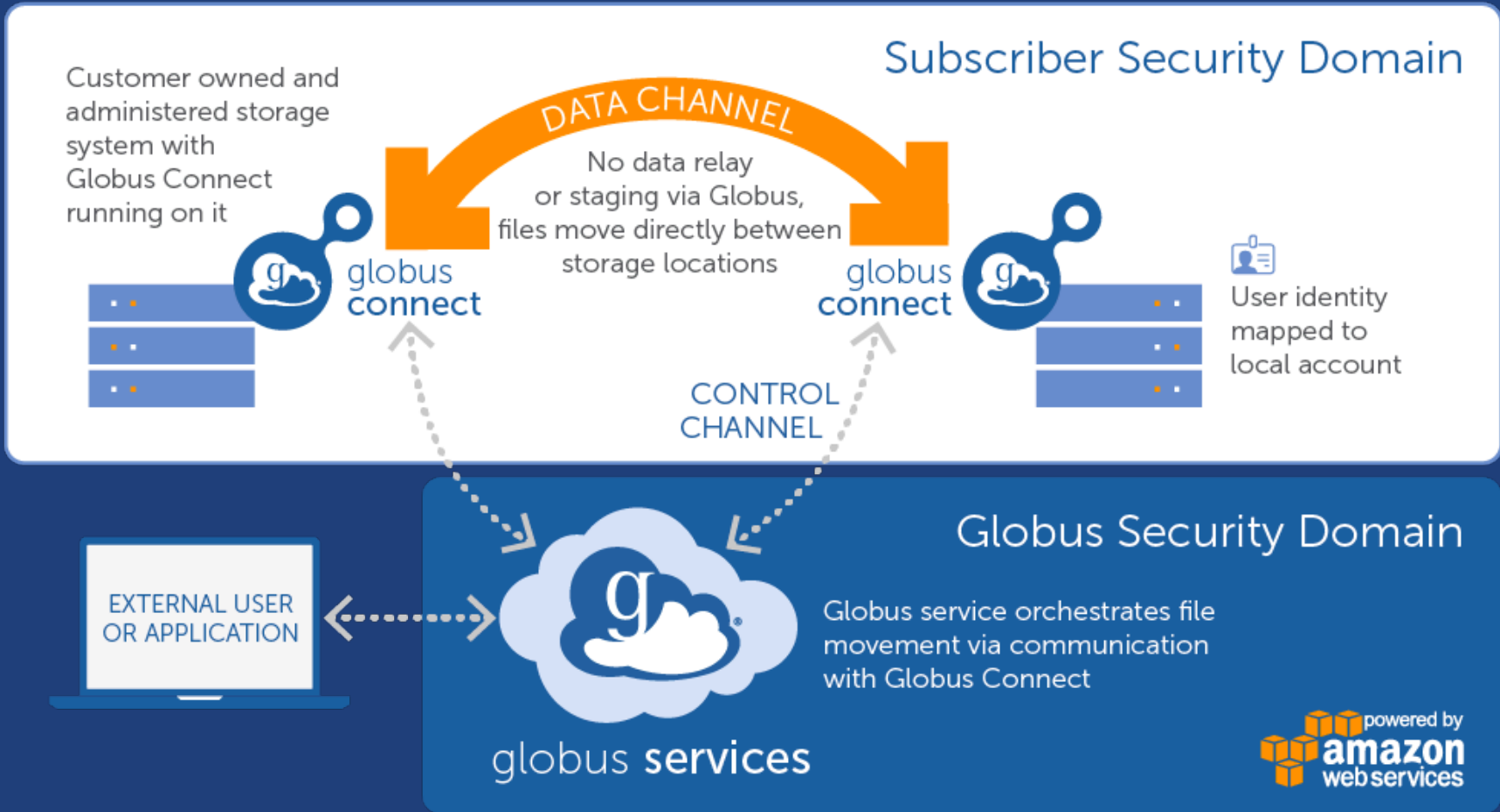
8 ...and automating research workflows - ensuring those that need access to the data have it.



- Use a Web browser or platform services
- Access any storage
- Use an existing identity

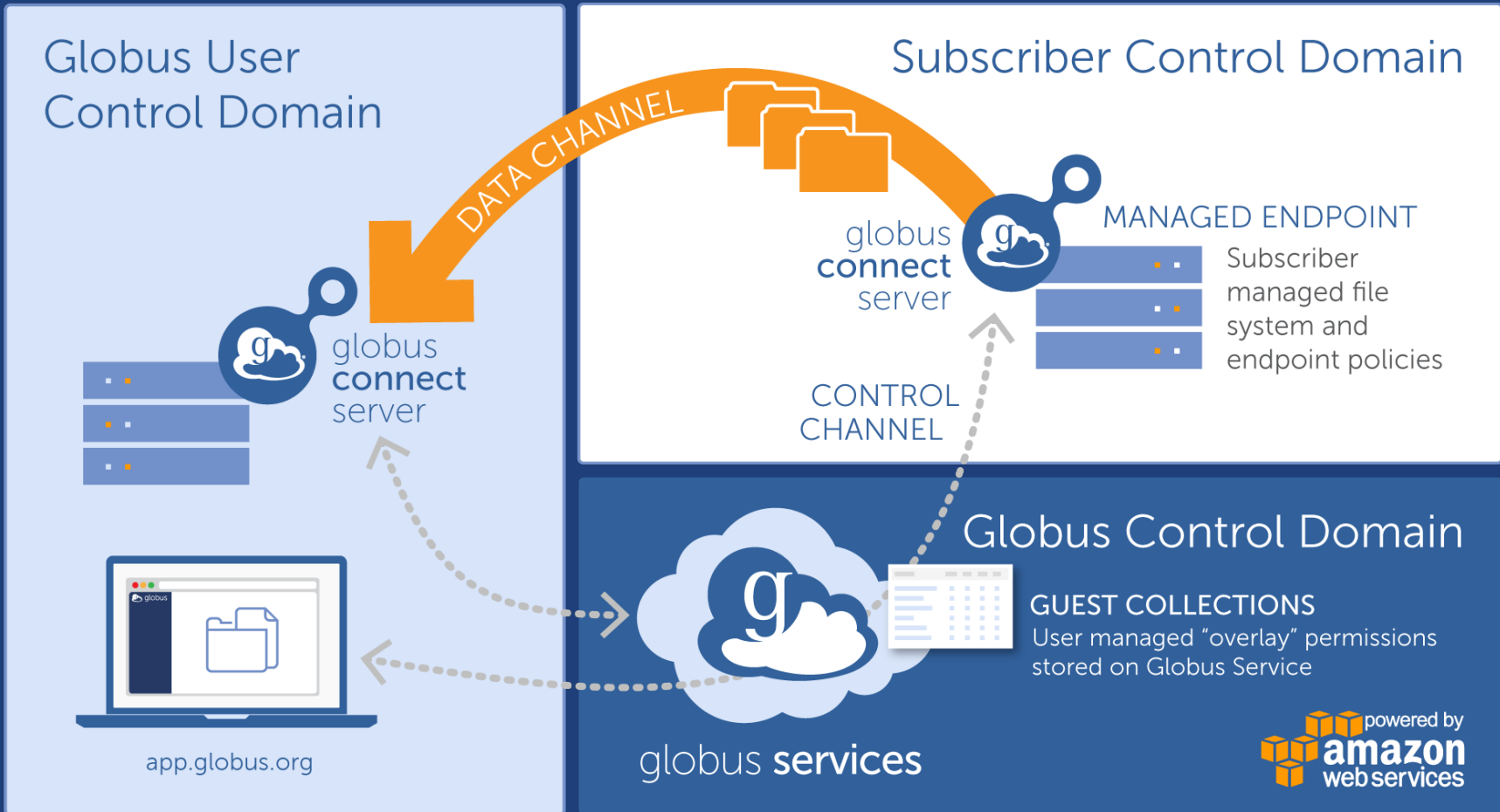


# Hybrid SaaS – Transfer – Mapped Collections





# Hybrid SaaS – Sharing – Guest Collections





# Globus core security features



- **Access Control**
  - Identities provided and managed by institution
  - Institution controls all access policies
  - Globus is identity broker; no access to/storage of user credentials
  - Fine grained access control on the collections
- **Data remain at institutions, not stored by Globus**
- **Data does not flow through the Globus Service but directly between Endpoints and their Collections**
- **Integrity checks of transferred data**
- **High availability and redundancy**
- **Encryption of user files and Globus control data**



## Collections and Globus Connect

- **Globus Connect Server**



- Multi user Linux Systems

- <https://docs.globus.org/globus-connect-server/>

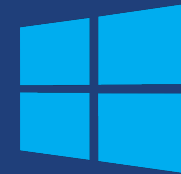
- **Globus Connect Personal**

- Personal Workstations and Laptops

- <https://www.globus.org/globus-connect-personal>

- OS specific instructions

- <https://docs.globus.org/how-to/>





# Globus Transfer Demo

- Authenticating to Globus
  - Linking in other identities
- The hamburger menu – file / folder management
- Transfer to and from ALCF resources
  - theta, cooley, thetagpu, grand
  - University of Chicago RCC Midway
- Globus Connect Personal
  - Installation
  - Transfer





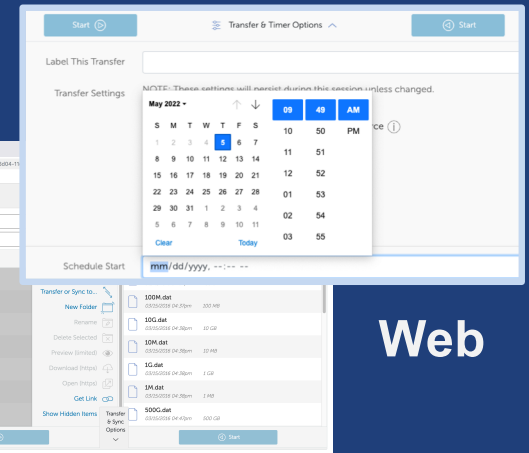
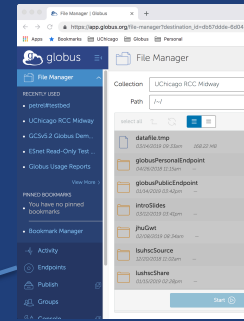
# One service, many interfaces

```
(globus-cli) jupiter:~ vas$ globus
Usage: globus [OPTIONS] COMMAND [ARGS]...

Options:
  -v, --verbose          Control level of output
  -h, --help            Show this message and exit.
  -F, --format [json|text] Output format for stdout. Defaults to text
  --map-http-status TEXT Map HTTP statuses to any of these exit codes:
                        0,1,50-99. e.g. "404=50,403=51"

Commands:
  bookmark          Manage Endpoint Bookmarks
  config           Modify, view, and manage your Globus CLI config.
```

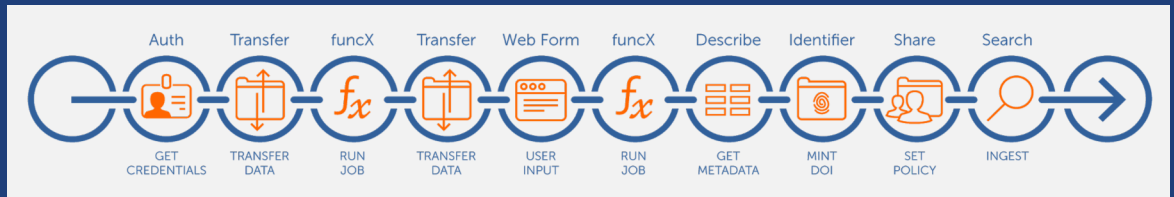
CLI



Web



Globus service



Flows

```
GET /endpoint/go%23ep1
PUT /endpoint/vas#my_endpt
200 OK
X-Transfer-API-Version: 0.10
Content-Type: application/json
...
```

Rest API



# Globus Automation Capabilities



## Timer Service

Scheduled and recurring transfers  
(*a.k.a. Globus cron*)

## Command Line Interface

Ad hoc scripting and integration



## Globus Flows service

Comprehensive task (data and compute) orchestration with human in the loop interactions



## Globus APIs

- Auth
  - Groups
  - **Transfer**
  - Search
  - Timer
  - Flows
  - GCS Manager
- Globus Web App consumes public Transfer API
  - Resource named by URL (standard REST approach)
  - Globus APIs use JSON for documents

[docs.globus.org/api/transfer](https://docs.globus.org/api/transfer)



# Globus Python SDK

- **Python client library for the Globus REST APIs**
- **Largely direct mapping to REST API**
- **`globus_sdk.TransferClient` class handles connection management, security, framing, marshaling**

[globus-sdk-python.readthedocs.io/en/stable/  
globus.github.io/globus-sdk-python](https://globus-sdk-python.readthedocs.io/en/stable/globus.github.io/globus-sdk-python)



## Support Resources

- **Globus Documentation:** [docs.globus.org](https://docs.globus.org)
- **Globus Timer:** [globus.org/blog/scheduled-and-recurring-transfers-now-available-globus-web-app](https://globus.org/blog/scheduled-and-recurring-transfers-now-available-globus-web-app)
- **Globus CLI:** [docs.globus.org/cli/](https://docs.globus.org/cli/)
- **Globus Automation Services and Flows:** [docs.globus.org/globus-automation-services/](https://docs.globus.org/globus-automation-services/)
- **YouTube Channel:** [youtube.com/user/GlobusOnline](https://youtube.com/user/GlobusOnline)



# Developer References

- Globus API / SDK Documentation
  - Transfer API : [docs.globus.org/api/transfer/](https://docs.globus.org/api/transfer/)
  - SDK: [globus-sdk-python.readthedocs.io/en/stable/](https://globus-sdk-python.readthedocs.io/en/stable/)
- Globus GitHub: [github.com/globus/](https://github.com/globus/)
  - Jupyter Notebooks
    - Stand alone notebooks and hub integrations that walk through much of the functionality of our SDK
    - <https://github.com/globus/globus-jupyter-notebooks>
  - Automation Examples
    - Shell scripted CLI and Python module examples of common research data management use cases
    - <https://github.com/globus/automation-examples>

# Introduction to Globus for ALCF Users

## Research Data Transfer

2022 ALCF Computational Performance Workshop  
May 26, 2022

**Greg Nawrocki**  
[greg@globus.org](mailto:greg@globus.org)  
[nawrocki@uchicago.edu](mailto:nawrocki@uchicago.edu)  
[nawrocki@anl.gov](mailto:nawrocki@anl.gov)



THE UNIVERSITY OF  
**CHICAGO**

